

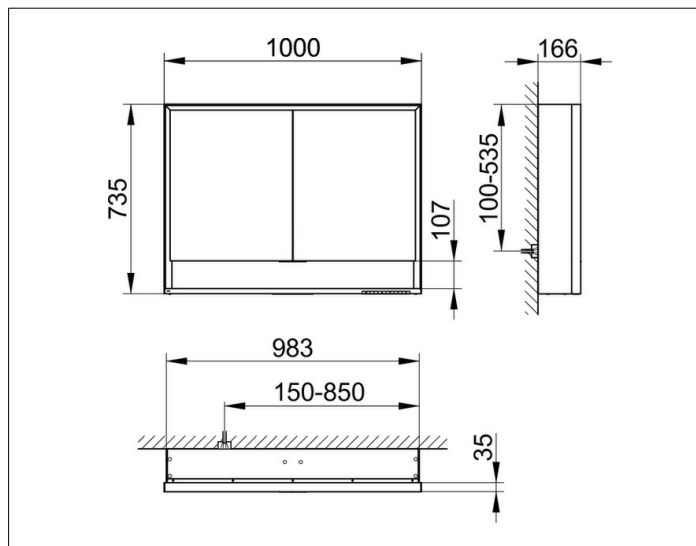
## Royal Lumos

14304171335 Mirror cabinet

### PRODUCT



### DRAWING



### PRODUCT ATTRIBUTES

wall mounted,  
 with mirror heating (placed in the centre of the doors),  
 adjustable light colour from 2700 kelvin (warm white)  
 to 6500 kelvin (daylight),  
 2 hinged double sided crystal mirrored doors,  
 Body: aluminium silver anodized  
 interior rear wall mirrored  
 Operation:  
 key panel with capacitive touch sensor,  
 DALI controlled  
 Mirror heating:  
 60 watt, visual display of the heat up period,  
 automatic switch-off is performed after 20 minutes  
 Illumination:  
 frame lighting and washbasin/shelf light separately,  
 infinitely dimmable and can be switched on/off  
 LED 60 watt (lifespan > 30.000 hours)

### EQUIPMENT

- 1 shaver socket
- 2 x 2 adjustable glass shelves
- storage space across full width
- soft-closing door

### SURFACE

silver anodized

### DIMENSION

1000 x 735 x 165 mm