

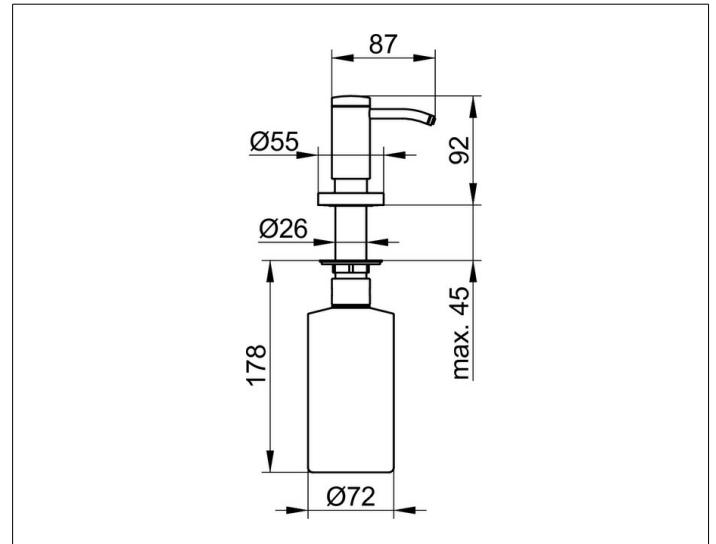
Plan

14949070200 Lotion dispenser

PRODUCT



DRAWING



PRODUCT ATTRIBUTES

for installation in vanity or vanity unit

Capacity: approx. 500 ml

Dosage: approx. 1 ml/stroke

SURFACE

stainless steel

SPECIFICATIONS

KEUCO PLAN lotion dispenser for installation in vanity or vanity unit, 14949070200

Lotion dispenser in high grade stainless steel, in a stylish yet functional design

for installation in wash basins and wash tops up to a thickness of 45 mm complete with a removable inbuilt synthetic dispenser

for easy cleaning and filling

Capacity: 500 ml, for standard liquid soap,

Dosage: approx. 0.5 ml/stroke

for installation a borehole of 26,3 mm in the wash basin or wash top is necessary,

this will be covered after installation by a chrome-plated design cover cap, visible dispenser height: 92 mm, projection: 86 mm

the removable inbuilt synthetic dispenser requires for fitting a clearance height of at least 200 mm