

**Plan**

**14949170200 Lotion dispenser**

**PRODUCT**



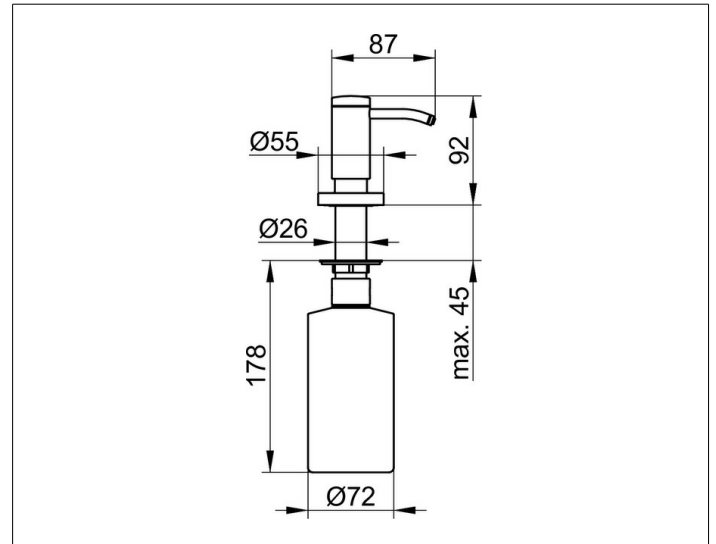
**PRODUCT ATTRIBUTES**

for installation in vanity or vanity unit  
Capacity: approx. 500 ml  
Dosage: approx. 1 ml/stroke

**SURFACE**

aluminium finish

**DRAWING**



**SPECIFICATIONS**

KEUCO PLAN lotion dispenser for installation in vanity or vanity unit, 14949170200  
a classic aluminum finish lotion dispenser in a stylish yet functional design for installation in wash basins and wash tops up to a thickness of 45 mm complete with a removable inbuilt synthetic dispenser for easy cleaning and filling  
Capacity: 500 ml, for standard liquid soap,  
Dosage: approx. 0.5 ml/stroke  
for installation a borehole of 26,3 mm in the wash basin or wash top is necessary,  
this will be covered after installation by a chrome-plated design cover cap,  
visible dispenser height: 92 mm, projection: 86 mm  
the removable inbuilt synthetic dispenser requires for fitting a clearance height of at least 200 mm