

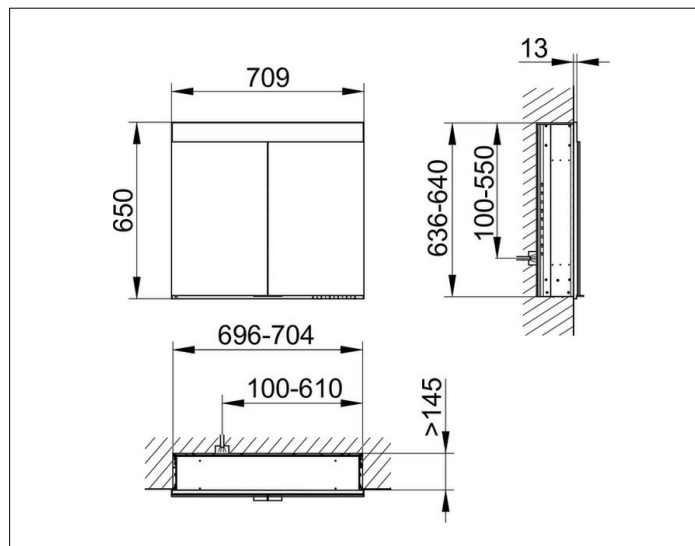
Edition 400

21541171303 Mirror cabinet

## PRODUCT



## DRAWING



## PRODUCT ATTRIBUTES

for recessed installation,  
 with mirror heating (placed in the centre of the doors),  
 adjustable light colour from 2700 kelvin (warm white)  
 to 6500 kelvin (daylight),  
 2 hinged double sided crystal mirrored doors,  
 Body: aluminium silver anodized  
 interior rear wall mirrored  
 Operation:  
 key panel with capacitive touch sensor,  
 DALI controlled  
 Mirror heating:  
 56 watt, visual display of the heat up period,  
 automatic switch-off is performed after 20 minutes  
 Illumination:  
 LED 26 watt (lifespan > 30.000 hours)  
 infinitely dimmable  
 EEK: C , 26 kWh/1000h

## EQUIPMENT

- 2 sockets
- 3 adjustable glass shelves
- storage box with slidable glass lid
- interior lighting
- soft-closing doors

## SURFACE

silver anodized

## DIMENSION

710 x 650 x 154 mm