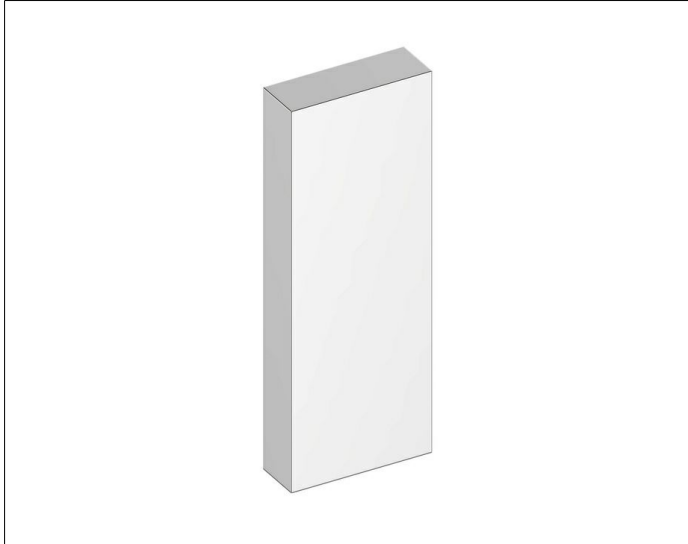


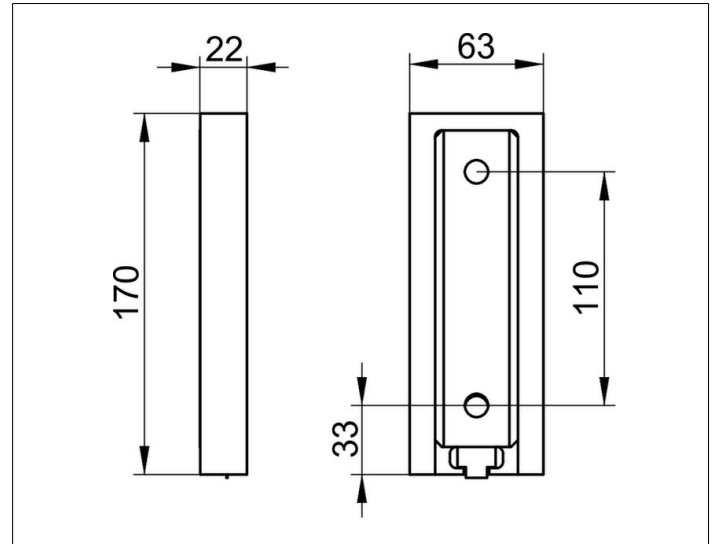
Plan Care

34903010000 Cover plate

PRODUCT



DRAWING



PRODUCT ATTRIBUTES

for wall bracket, for supporting rails (removable version),
art.-no. 34903

SURFACE

chrome-plated

NOTE

SPECIFICATIONS

KEUCO Plan Care Cover plate for wall bracket bracket,
for supporting rails (removable version) 34903010000
height 170 mm, width 63 mm, depth 22 mm
highgloss chrome-plated cover plate for wall,
incl. mounting set for wall,
the wall mounting is used to hold the wall cover plate
and, if necessary, for fixing
KEUCO Plan Care drop down supporting rail:
34903013737
34903013738
34903013751

The mounting set is to be ordered separately

Essential for mounting, depending on wall types
1 x Mounting set 3 (article no. 34992000100) or
1 x Mounting set 6 (article no. 34992000200) or
1 x Mounting set 9 (article no. 34995000200) or
1 x Mounting set 11 (article no. 34997000100)