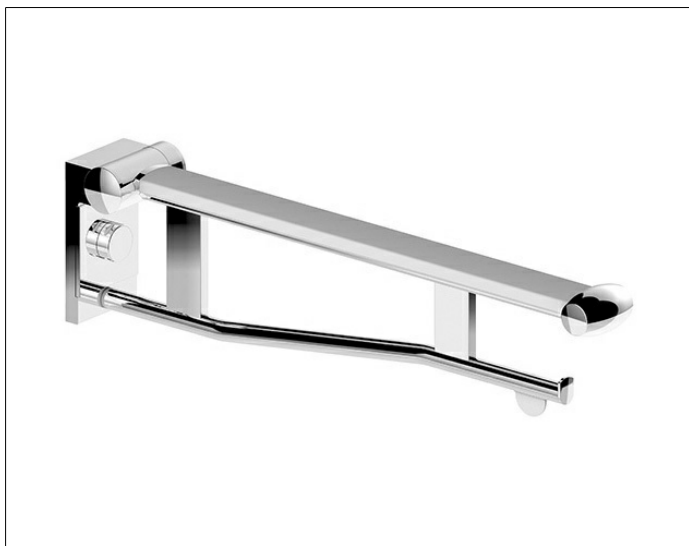


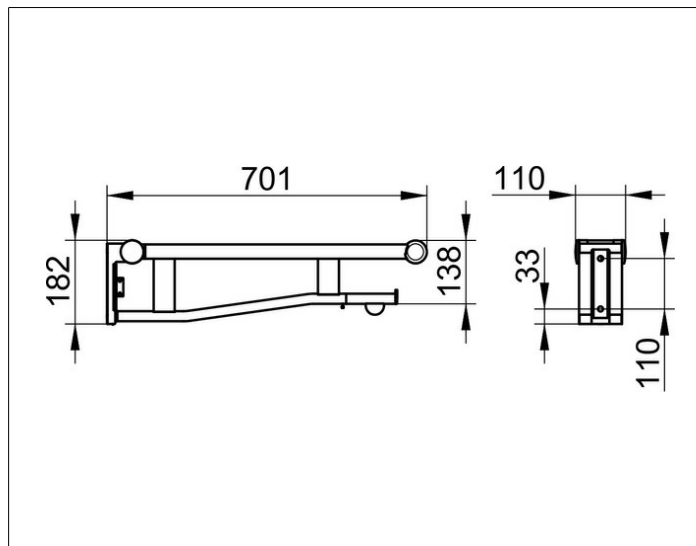
Plan Care

34903173738 Drop down supporting rail for WC

PRODUCT



DRAWING



PRODUCT ATTRIBUTES

removable, with synthetic covered support,
movable to vertical position,
with removable toilet paper holder (with roll brake)

SURFACE

aluminium silver anodized (E6 EV1)/light grey (RAL 7035)

DIMENSION

700 mm

NOTE

SPECIFICATIONS

KEUCO PLAN CARE Drop down supporting rail (removable version) for WC 34903173738

removable drop down supporting rail in aluminium silver anodized with synthetic covered support, in an aesthetic, functional and ergonomic design, incl. mounting set for wall, the handle is locked by means of an adjusting screw on the wall fastening, removable without tools

Wall mounting can be optionally used with cover plate for wall bracket (34903170000)

or with cover plate for wall bracket incl. toilet paper holder (34903170001) be covered please order separately, especially suitable for use in the toilet area, integrated in the lower beam,

removable toilet paper holder with roll brake to use commercially available toilet paper rolls, meets the requirements of DIN 18040, movable, space-saving version with lowering brake,

easy to clean, antistatic, ergonomically favourable, wide contact surface with non-slip, light grey (RAL 7035) plastic coating, raised, tactile and optically contrasting handle,

lower beam to be used as towel holder,

projection 700 mm, height 182 mm,

width 110 mm,

maximum load 115 kg at the foremost point according to DIN 18040

The handle is type tested,

The mounting set is to be ordered separately

Essential for mounting, depending on wall types

1 x Mounting set 3 (article no. 34992000100) or
1 x Mounting set 6 (article no. 34992000200) or
1 x Mounting set 9 (article no. 34995000200) or
1 x Mounting set 11 (article no. 34997000100)