

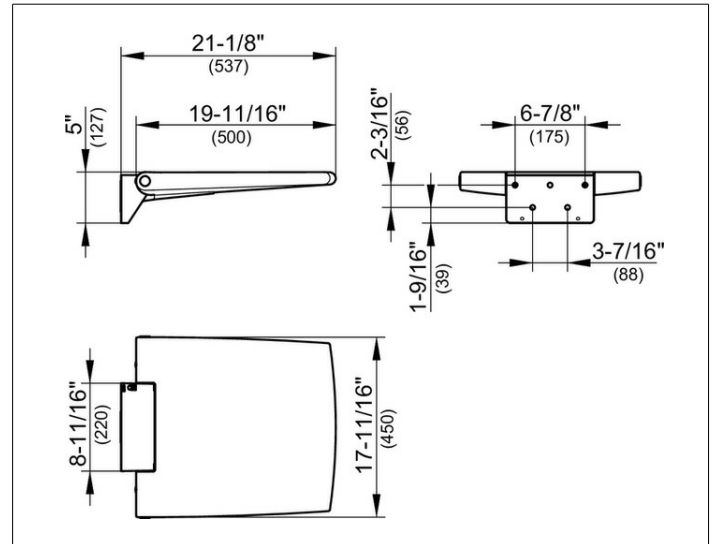
Plan Care

35983010037 Tip-up seat

PRODUCT



DRAWING



PRODUCT ATTRIBUTES

wall mounted
tip-up soft seat

SURFACE

chrome-plated/dark grey (RAL 7021)

SPECIFICATIONS

KEUCO PLAN CARE Tip-up seat 35983010037
dark-grey (RAL 7021) tip-up seat
made from Polyurethane-foam
in aesthetic, functional design,
for wall mounting for safe seats in the shower area
Wall bracket and chromed seat support
as design element
anti-static,
easy Cleaning with max. 60% Ethanol- or Propanol detergent,
other disinfectants are not recommended
fold-up seat up to 253 Lb
Width 17-11/16' (450 mm),
length of the seat 19-11/16' (500 mm),
Projection 22-1/8' (537 mm).