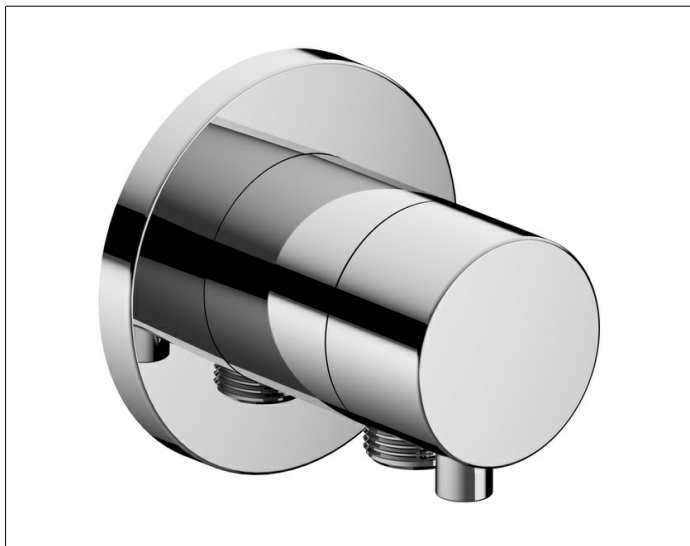


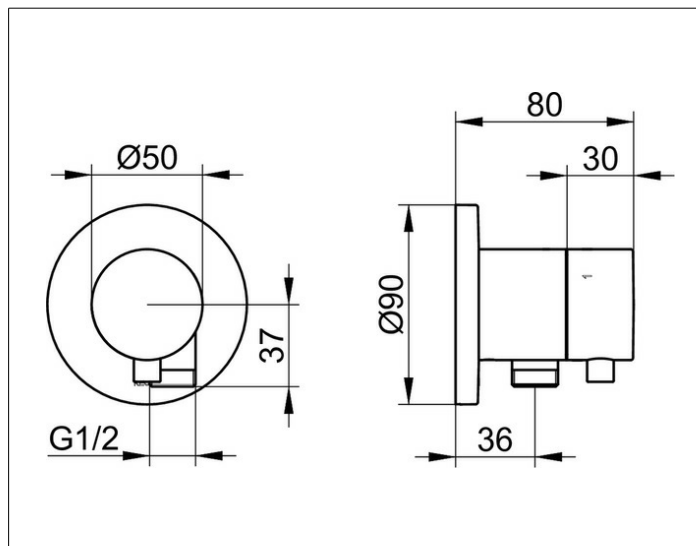
IXMO

59549011101 3-way stop and diverter valve with wall outlet for shower hose DN 15

PRODUCT



DRAWING



PRODUCT ATTRIBUTES

Set complete with:
handle, casing, rosette (round) and stop and diverter valve,
inherently safe against backflow,
suitable for rough part no. 59548 000170

SURFACE

chrome-plated

DIMENSION

IXMO Comfort, rund

SPECIFICATIONS

KEUCO IXMO 3-way stop and diverter valve
with wall outlet for shower hose UP DN15, 59549011101
3-way stop and diverter valve of highgloss chrome-plated brass
with IXMO handle Comfort and valve with wall outlet for shower hose, free
positionable,
integrated installation depth compensation of 80-110 mm,
with adjustment option for fine assembly
for lever unit and disc,
with round decorative disc, valve with wall outlet for shower hose G 1/2 inch,
disc diameter 90 mm, thickness 10 mm,
Total projection 80 mm,
the valve with wall outlet for shower hose is inherently safe against
backflow, DIN EN 1717
All inlets planned below the water inlet line
must be checked and, if necessary, according to DIN 1988
secure against backflow

Set complete with:
handle, outer shell, disc (round) and stop and diverter valve
suitable for concealed installation unit article no. 59548000170