

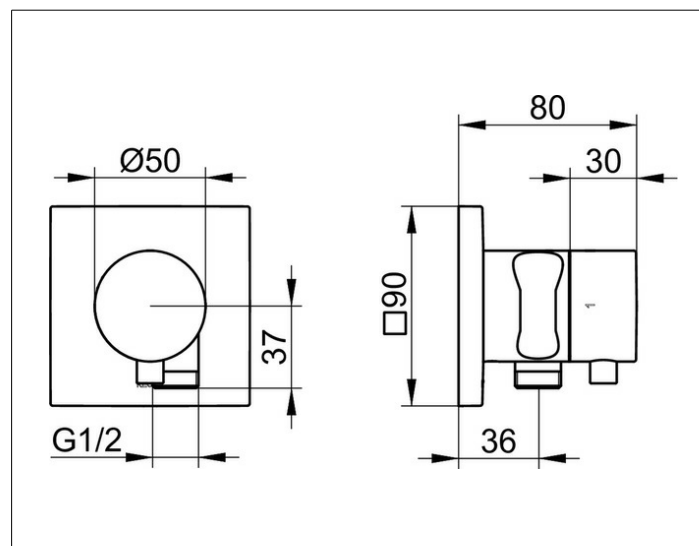
## IXMO

59549371202 3-way diverter valve with wall outlet for shower hose and hand shower bracket DN 15

### PRODUCT



### DRAWING



### PRODUCT ATTRIBUTES

for shower hoses with fitted conical end brackets  
Set complete with:  
handle, casing, rosette (square) and stop and diverter valve  
inherently safe against backflow,  
suitable for rough part no. 59548 000170

### SURFACE

black matt

### DIMENSION

IXMO Comfort, eckig