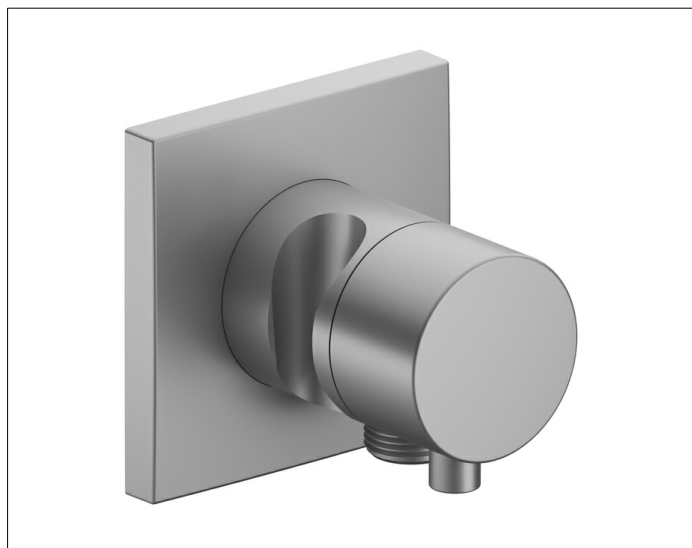


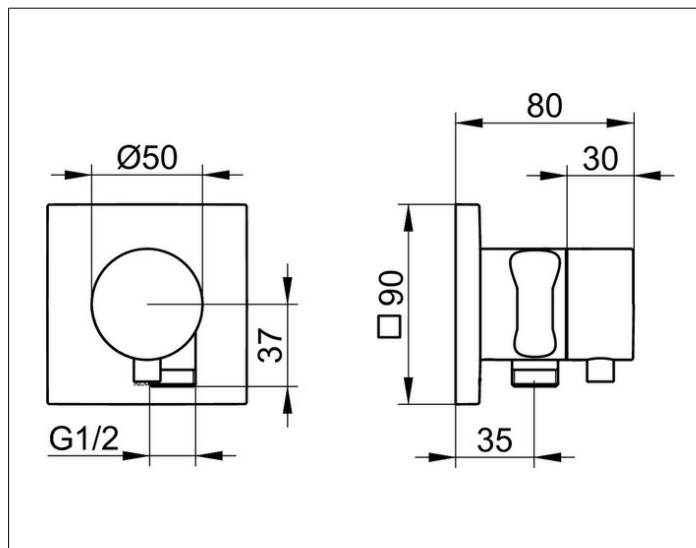
IXMO

59556171202 2-way diverter valve with wall outlet for shower hose and hand shower bracket DN 15

PRODUCT



DRAWING



PRODUCT ATTRIBUTES

for shower hoses with fitted conical end brackets
Set complete with:
handle, casing, rosette (square) and diverter valve,
intrinsicly safe against backflow,
suitable for rough part no. 59556 000170

SURFACE

aluminium finish

DIMENSION

IXMO Comfort, eckig