

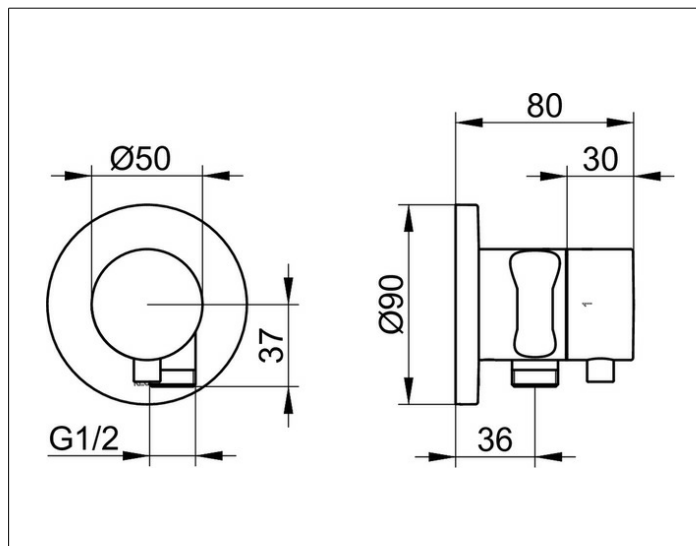
**IXMO**

**59557011201 2-way stop and diverter valve with wall outlet for shower hose and hand shower bracket DN 15**

**PRODUCT**



**DRAWING**



**PRODUCT ATTRIBUTES**

for shower hoses with fitted conical end brackets  
Set complete with:  
handle, casing, rosette (round) and stop and diverter valve,  
intrinsically safe against backflow,  
suitable for rough part no. 59556 000170

**SURFACE**

chrome-plated

**DIMENSION**

IXMO Comfort, rund

**SPECIFICATIONS**

KEUCO IXMO 2-way stop and diverter valve  
with wall outlet for shower hose  
and hand shower bracket DN 15, 59557011201  
chrome-plated 2-way stop and diverter valve  
with wall outlet for shower and hand shower bracket,  
IXMO Comfort lever with round rosette,  
freely positionable, with backflow preventer,  
installation depth 80 - 110 mm,  
with adjustment facilities whilst assembling  
for handle and rosette,  
with hose connection G1/2 inch and integrated hand shower bracket,  
for shower hoses with fitted conical end brackets,  
e.g KEUCO shower hose 54995...,  
rosette diameter 90 mm, 10 mm thick,  
total depth 80 mm,  
set complete with:  
handle, sleeve, rosette (round) and stop/diverter valve,  
suitable for rough part no. 59556000170