

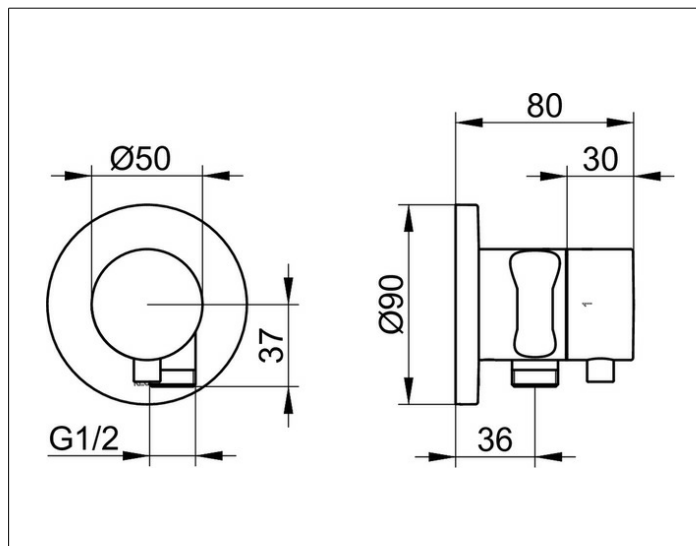
## IXMO

59557371201 2-way diverter valve with wall outlet for shower hose and hand shower bracket DN 15

### PRODUCT



### DRAWING



### PRODUCT ATTRIBUTES

for shower hoses with fitted conical end brackets

Set complete with:

handle, casing, rosette (round) and stop and diverter valve,  
inherently safe against backflow,  
suitable for rough part no. 59556 000170

### SURFACE

black matt

### DIMENSION

IXMO Comfort, rund